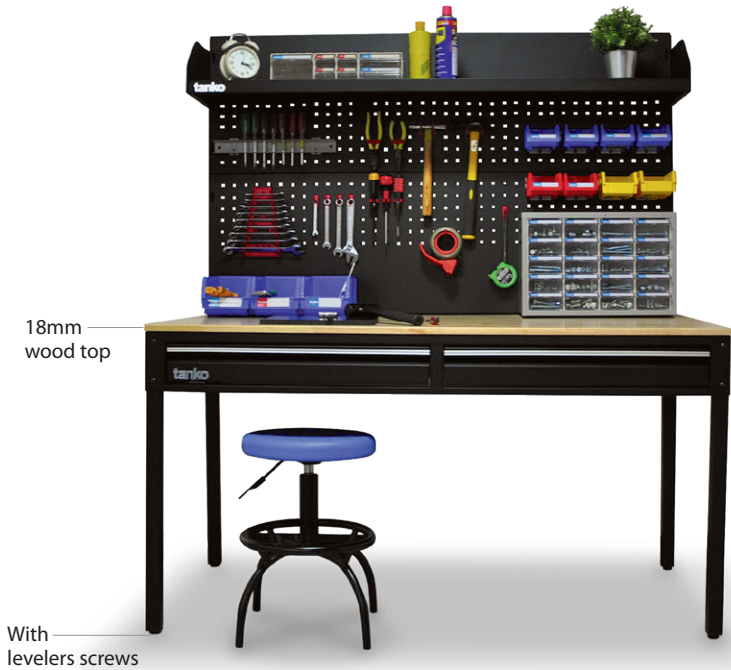




# Workbench

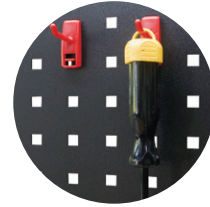


18mm wood top

With levelers screws



Extra shelf for extra storage space



Perforated board can be used with all Tanko hangers  
Refer to P41~P43



Cable grommet



<input type="radio"/>	<b>WE-47W</b>	W1200xD600xH750
<input type="radio"/>	<b>WE-58W</b>	W1500xD750xH800



<input type="radio"/>	<b>WE-47W3</b>	W1200xD620xH1355
<input type="radio"/>	<b>WE-58W3</b>	W1500xD770xH1710



<input type="radio"/>	<b>WE-47W4</b>	W1200xD620xH1355
<input type="radio"/>	<b>WE-58W4</b>	W1500xD770xH1710
<input type="radio"/>	<b>WE-47W5</b>	W1200xD620xH1355 Light WP-9003
<input type="radio"/>	<b>WE-58W5</b>	W1500xD770xH1710 Light WP-9003 + WP-9004



<input type="radio"/>	<b>WET-4102W</b>	W1200xD610xH750
<input type="radio"/>	<b>WET-5102W</b>	W1500xD760xH800



<input type="radio"/>	<b>WET-4102W3</b>	W1200xD625xH1355
<input type="radio"/>	<b>WET-5102W3</b>	W1500xD775xH1710



<input type="radio"/>	<b>WET-4102W4</b>	W1200xD625xH1355
<input type="radio"/>	<b>WET-5102W4</b>	W1500xD775xH1710
<input type="radio"/>	<b>WET-4102W5</b>	W1200xD625xH1355 Light WP-9003
<input type="radio"/>	<b>WET-5102W5</b>	W1500xD775xH1710 Light WP-9003 + WP-9004

Unit of Measurement : mm

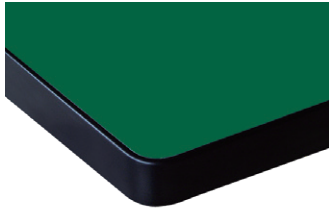
## Workbench-Top Type

## Dimensions

## Features

**N**

Rubber top



W1500  
x D750 x H30  
W1800

High density fiberboard(HDF) covered with green rubber mat on top and PVC protection on four edges.

**F**

Laminate top



W1500  
x D750 x H30  
W1800

Plywood top covered with gray laminate and PVC protective edges, great performance in high temperature environment.

**W**

Wood top



W1500  
x D750 x H30  
W1800

Finger-jointed rubber wood to ensure high durability.



**KG 600kg load capacity**



Various types of drawer / base designs



With levelers screws



Perforated board can be used with all Tanko hangers  
Refer to P41~43



### Standard

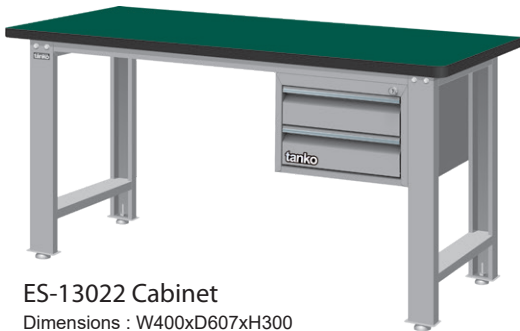
Dimensions	Rubber top N	Laminate top F	Wood top W
W1500xD750xH800	<b>WB-57N</b>	<b>WB-57F</b>	<b>WB-57W</b>
W1800xD750xH800	<b>WB-67N</b>	<b>WB-67F</b>	<b>WB-67W</b>



### Drawers

Dimensions	Rubber top N	Laminate top F	Wood top W
W1500xD750xH800	<b>WBT-5203N</b>	<b>WBT-5203F</b>	<b>WBT-5203W</b>
W1800xD750xH800	<b>WBT-6203N</b>	<b>WBT-6203F</b>	<b>WBT-6203W</b>

**KG** 50kg load capacity per drawer



### Hanging Cabinet

Dimensions	Rubber top N	Laminate top F	Wood top W
W1500xD750xH800	<b>WBS-53022N</b>	<b>WBS-53022F</b>	<b>WBS-53022W</b>
W1800xD750xH800	<b>WBS-63022N</b>	<b>WBS-63022F</b>	<b>WBS-63022W</b>

ES-13022 Cabinet  
Dimensions : W400xD607xH300

**KG** 45kg load capacity per drawer



### Tool Cabinet

Dimensions	Rubber top N	Laminate top F	Wood top W
W1500xD750xH1400	<b>WB-57N6A</b>	<b>WB-57F6A</b>	<b>WB-57W6A</b>
W1800xD750xH1400	<b>WB-67N6A</b>	<b>WB-67F6A</b>	<b>WB-67W6A</b>

+

W566xD510xH700	<b>EGA-7041</b>
----------------	-----------------

Power plugs not included.

**KG** 45kg load capacity per drawer

EGA-7041 Tool Cabinet Refer to P21  
Perforated panels are optional, please refer to P18



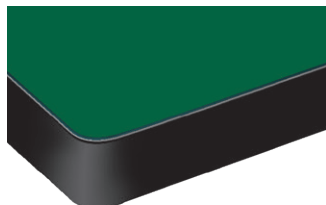
## Workbench-Top Type

## Dimensions

## Features

**N**

Rubber top



W1500  
W1800 x D750 x H50  
W2100

High density fiberboard(HDF) covered with green rubber mat on top and PVC protection on four edges.

**F**

Laminate top



W1500  
W1800 x D750 x H50  
W2100

Plywood top covered with gray laminate and PVC protective edges, great performance in high temperature environment.

**W**

Wood top

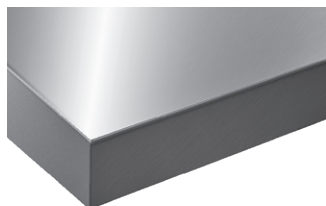


W1500  
W1800 x D750 x H50  
W2100

Finger-jointed rubber wood to ensure high durability.

**S**

Stainless steel top

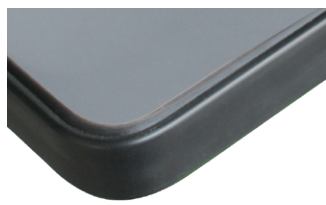


W1500  
W1800 x D750 x H50  
W2100

High density material covered with 1.2mm stainless steel sheet.

**T**

Tanko top

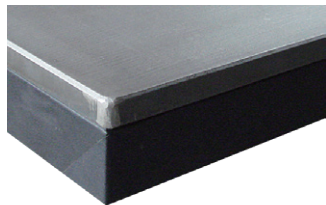


W1500 x D750 x 36 (TG)  
W1800 x D750 x 43 (TH)

Multi-layer laminate and PVC protection on four edges.

**A**

Benchwork top



W1500 x D750 x H50  
W1800

36mm base material covered with 9mm steel plate.

**P.Q**

Steel top

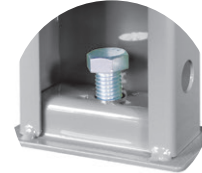


W1200  
W1500 x D750 x H50  
W1800

Made from 2mm steel, covered with 10mm black rubber mat(P) or 12mm PVC mat(Q).



Various types of drawer / base designs



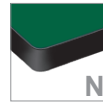
With levelers screws



Perforated panels are optional  
Refer to P18

**KG 2000kg load capacity**  
**KG 1000kg load capacity (Mobile type)**

Workbench-top types Refer to P12



Rubber top



Laminate top



Wood top



Stainless steel top



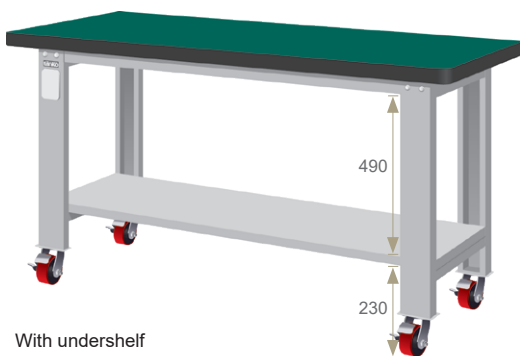
Tanko top

(TG)H36mm  
(TH)H43mm



### Standard

Workbench-top	N	F	S	W	TG	TH
Dimnesions	WxDxH				WxDxH	
<b>WA-56</b> □	—				<b>1500x650x786</b>	<b>1500x650x793</b>
<b>WA-57</b> □	<b>1500x750x800</b>				<b>1500x750x786</b>	<b>1500x750x793</b>
<b>WA-67</b> □	<b>1800x750x800</b>				<b>1800x750x786</b>	<b>1800x750x793</b>
<b>WA-77</b> □	<b>2100x750x800</b>				—	—



With undershelf

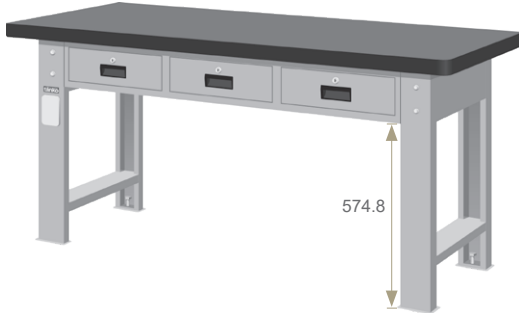
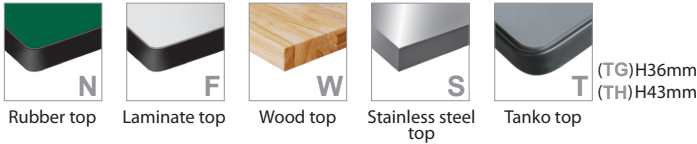
### Mobile

Workbench-top	N	F	S	W	TG	TH
Dimnesions	WxDxH				WxDxH	
<b>WA-57</b> □ <b>M</b>	<b>1500x750x850</b>				<b>1500x750x836</b>	<b>1500x750x843</b>
<b>WA-67</b> □ <b>M</b>	<b>1800x750x850</b>				<b>1800x750x836</b>	<b>1800x750x843</b>

**Model No. WA-57** □**N** / □ **Workbench-Top Types**

Unit of Measurement : mm

Workbench-top types [Refer to P12](#)



**KG** 50kg load capacity per drawer

## Drawers

Workbench-top	N	F	S	W	TG	TH
Dimensions	WxDxH				WxDxH	
<b>WAT-5203</b> <input type="checkbox"/>	1500x750x800				1500x750x786	1500x750x793
<b>WAT-6203</b> <input type="checkbox"/>	1800x750x800				1800x750x786	1800x750x793



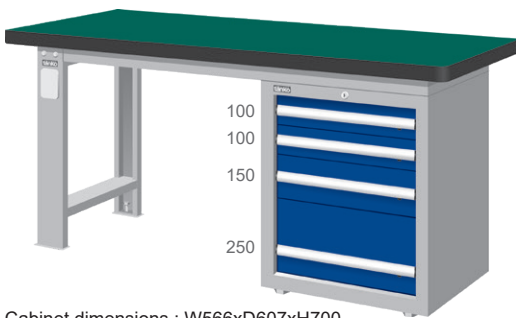
Cabinet dimensions : W566xD607xH380

**KG** 100kg load capacity per drawer

[Refer to P24](#)

## Hanging Cabinet

Workbench-top	N	F	S	W	TG	TH
Dimensions	WxDxH				WxDxH	
<b>WAS-54031</b> <input type="checkbox"/>	1500x750x800				1500x750x786	1500x750x793
<b>WAS-64031</b> <input type="checkbox"/>	1800x750x800				1800x750x786	1800x750x793
<b>WAS-74031</b> <input type="checkbox"/>	2100x750x800				—	—



Cabinet dimensions : W566xD607xH700

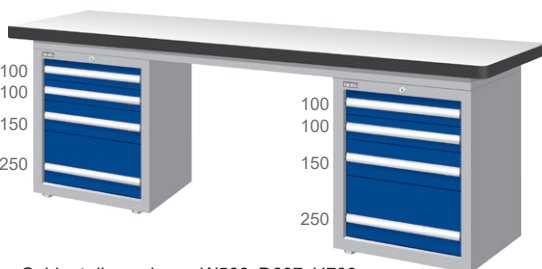
**KG** 100kg load capacity per drawer

[Refer to P25](#)

## Tool Cabinet

Workbench-top	N	F	S	W	TG	TH
Dimensions	WxDxH				WxDxH	
<b>WAS-57042</b> <input type="checkbox"/>	1500x750x800				1500x750x786	1500x750x793
<b>WAS-67042</b> <input type="checkbox"/>	1800x750x800				1800x750x786	1800x750x793
<b>WAS-77042</b> <input type="checkbox"/>	2100x750x800				—	—

Heavy Duty Workbench



Cabinet dimensions : W566xD607xH700

**KG** 100kg load capacity per drawer

[Refer to P25](#)

## Double Tool Cabinet

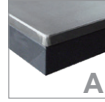
Workbench-top	N	F	S	W
Dimensions	WxDxH			
<b>WAD-77042</b> <input type="checkbox"/>	2100x750x800			

Model No. WAT-5203  N /  Workbench-Top Types

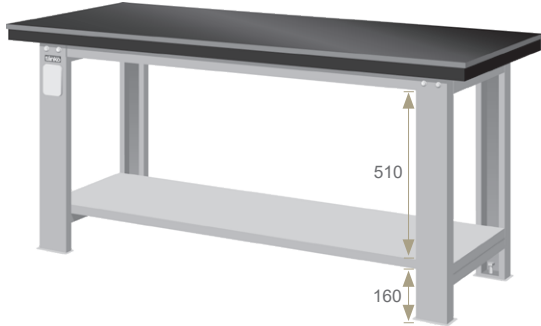
Unit of Measurement : mm

## Benchwork top

Refer to P12

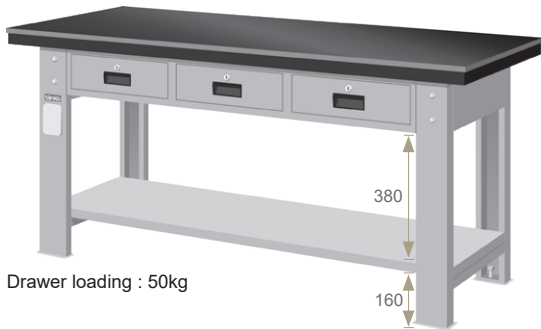


**2000kg load capacity**  
With undershelf



### Standard

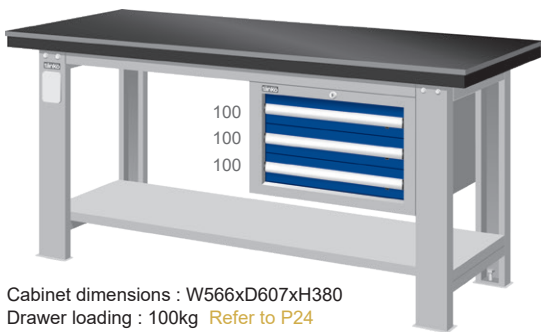
Dimensions	A Benchwork top
W1500xD750xH800	<b>WA-57A</b>
W1800xD750xH800	<b>WA-67A</b>



Drawer loading : 50kg

### Drawers

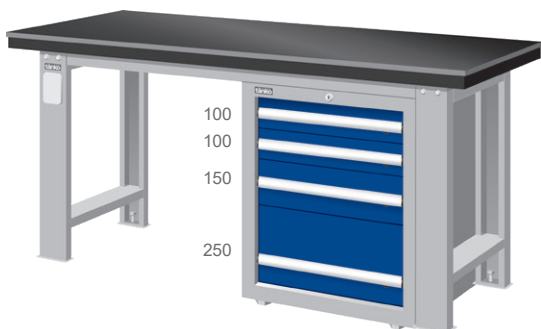
Dimensions	A Benchwork top
W1500xD750xH800	<b>WAT-5203A</b>
W1800xD750xH800	<b>WAT-6203A</b>



Cabinet dimensions : W566xD607xH380  
Drawer loading : 100kg [Refer to P24](#)

### Hanging Cabinet

Dimensions	A Benchwork top
W1500xD750xH800	<b>WAS-54031A</b>
W1800xD750xH800	<b>WAS-64031A</b>



Cabinet dimensions : W566xD607xH700  
Drawer loading : 100kg [Refer to P25](#)

### Tool Cabinet

Dimensions	A Benchwork top
W1500xD750xH800	<b>WAS-57042A</b>
W1800xD750xH800	<b>WAS-67042A</b>



## Steel top

Refer to P12



**P** : 10mm Rubber mat  
**Q** : 12mm PVC mat



Perforated panels are optional  
Refer to P18



EA-7042 Refer to P25



EGA-7041 Refer to P21



**KG** 2000kg load capacity



### Standard

Steel-top	<b>P</b>	<b>Q</b>
Dimnesions	WxDxH	WxDxH
<b>WD-48</b> <input type="checkbox"/>	1224x775x810	1224x775x812
<b>WD-58</b> <input type="checkbox"/>	1524x775x810	1524x775x812
<b>WD-68</b> <input type="checkbox"/>	1824x775x810	1824x775x812



### Hanging Cabinet

Drawer loading : 45kg

Steel-top	<b>P</b>	<b>Q</b>
Dimnesions	WxDxH	WxDxH
<b>WD-4801</b> <input type="checkbox"/>	1224x775x810	1224x775x812
<b>WD-5801</b> <input type="checkbox"/>	1524x775x810	1524x775x812
<b>WD-6801</b> <input type="checkbox"/>	1824x775x810	1824x775x812

Heavy Duty Workbench



Drawer loading : 45kg

### Two Drawers

Steel-top	<b>P</b>	<b>Q</b>
Dimnesions	WxDxH	WxDxH
<b>WDT-4202</b> <input type="checkbox"/>	1224x775x810	1224x775x812

### Three Drawers

Steel-top	<b>P</b>	<b>Q</b>
Dimnesions	WxDxH	WxDxH
<b>WDT-5203</b> <input type="checkbox"/>	1524x775x810	1524x775x812
<b>WDT-6203</b> <input type="checkbox"/>	1824x775x810	1824x775x812

Model No. WD-58  **P** /  Workbench-Top Types

Unit of Measurement : mm

# Stainless Steel Workbench



**KG 600kg load capacity**



Various types of drawer / base designs



With leveler screws



Perforated panels are optional  
Refer to P18



<b>WD-48S</b>	W1217xD768xH800
<b>WD-58S</b>	W1517xD768xH800
<b>WD-68S</b>	W1817xD768xH800



Drawer loading : 35kg

## Two Drawers

<b>WDT-4202S</b>	W1217xD768xH800
------------------	-----------------

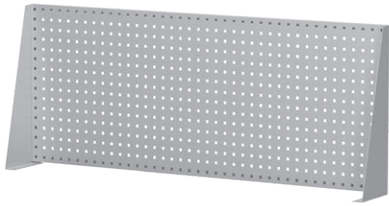
## Three Drawers

<b>WDT-5203S</b>	W1517xD768xH800
<b>WDT-6203S</b>	W1817xD768xH800

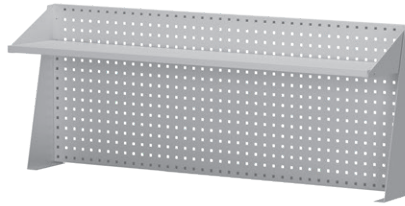
# Workbench Accessories

## Panel Set

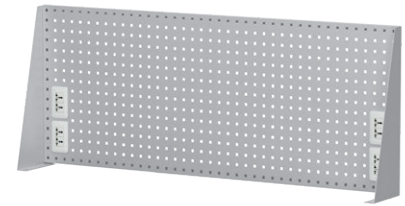
For both professional and heavy duty workbenches



<b>WQ-52</b>	W1502xD202xH603
<b>WQ-62</b>	W1802xD202xH603

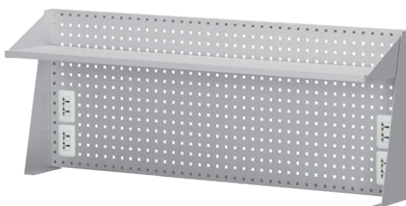


<b>WQ-53</b>	W1502xD325xH603
<b>WQ-63</b>	W1802xD325xH603



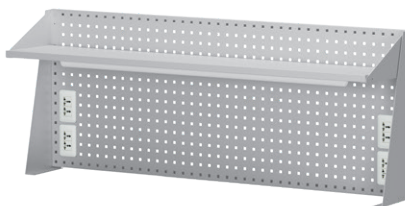
<b>WQ-54A</b>	W1502xD202xH603
<b>WQ-64A</b>	W1802xD202xH603
Universal Socket 110V~220V x 4	

Power plugs not included



<b>WQ-55A</b>	W1502xD325xH603
<b>WQ-65A</b>	W1802xD325xH603
Universal Socket 110V~220V x 4	

Power plugs not included



<b>WQ-56A</b>	W1502xD325xH603
<b>WQ-66A</b>	W1802xD325xH603
Universal Socket 110V~220V x 4	
20W LED Light	

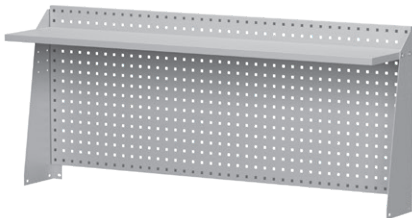
Power plugs not included



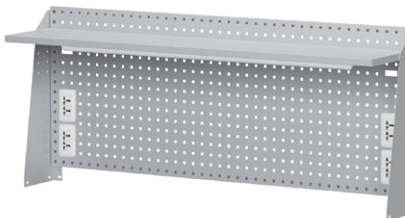
<b>WQ-67A</b>	W1780xD450xH564
Parts Cabinet : W218xD420xH540	
Universal Socket 110V~220V x 4	
20W LED Light	

Power plugs not included

For steel top workbench

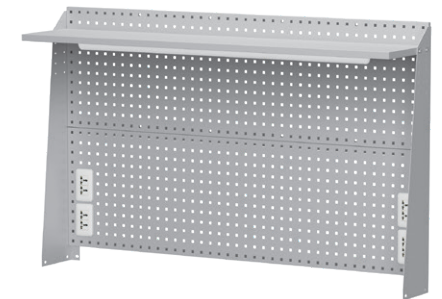


<b>WQD-43</b>	W1217xD320xH658
<b>WQD-53</b>	W1517xD320xH658
<b>WQD-63</b>	W1817xD320xH658



<b>WQD-46A</b>	W1217xD320xH658	10W
<b>WQD-56A</b>	W1517xD320xH658	20W
<b>WQD-66A</b>	W1817xD320xH658	20W
Universal Socket 110V~220V x 4		
LED Light (10W / 20W)		

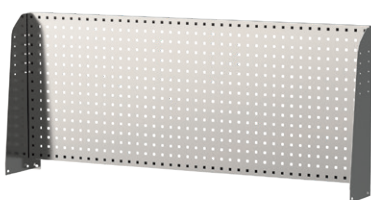
Power plugs not included



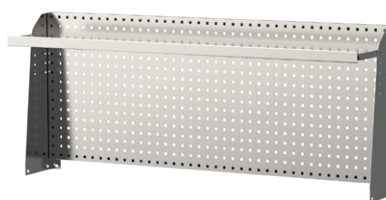
<b>WQD-49A</b>	W1217xD320xH958	10W
<b>WQD-59A</b>	W1517xD320xH958	20W
<b>WQD-69A</b>	W1817xD320xH958	20W
Universal Socket 110V~220V x 4		
LED Light (10W / 20W)		

Power plugs not included

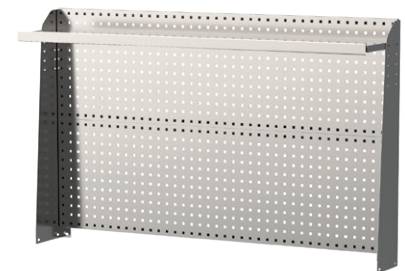
For stainless steel workbench



<b>WQD-42S</b>	W1209xD202xH645
<b>WQD-52S</b>	W1509xD202xH645
<b>WQD-62S</b>	W1809xD202xH645



<b>WQD-43S</b>	W1209xD320xH645
<b>WQD-53S</b>	W1509xD320xH645
<b>WQD-63S</b>	W1809xD320xH645



<b>WQD-47S</b>	W1209xD320xH945
<b>WQD-57S</b>	W1509xD320xH945
<b>WQD-67S</b>	W1809xD320xH945

Unit of Measurement : mm

### Undershelf



For heavy duty workbench

<b>WP-41</b>	W1400xD509xH30
<b>WP-42</b>	W1700xD509xH30
<b>WP-43</b>	W2000xD509xH30



For steel top workbench

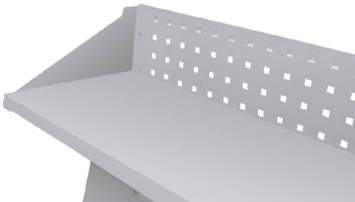
<b>WDP-14</b>	W1200xD660xH30
<b>WDP-15</b>	W1500xD660xH30
<b>WDP-16</b>	W1800xD660xH30



For stainless steel workbench

<b>WDP-14S</b>	W1200xD655xH30
<b>WDP-15S</b>	W1500xD655xH30
<b>WDP-16S</b>	W1800xD655xH30

### Shelf



<b>KP-19</b>	W1500xD300
<b>KP-20</b>	W1800xD300
<b>KP-21</b>	W2100xD300

### Air Coupling



<b>WP-9021</b>	2 holes
----------------	---------

### Socket



<b>WP-9013A</b>	110V~220V
-----------------	-----------

### Light



LED Light

<b>WP-9002</b>
W1150xD22xH39
20W

### Workbench Seating



<b>WP-625011</b>
W 350
D 350
H 480



<b>WP-625023</b>
W 350
D 350
H 500~640



Ultra Thin LED Light

<b>WP-9003</b>	<b>WP-9004</b>
W604xD32xH7	W604xD32xH7
15W	15W

WP-9003 can be extended with WP-9004



<b>WP-61301</b>
W 330 (Cushion)
D 600
H 400~510



<b>WP-61102</b>
W 430
D 490~530
H 810~925